

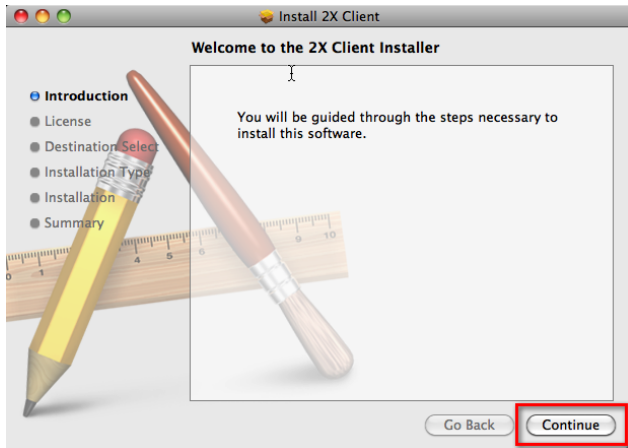
2x Setup for Mac

Use this procedure when you would like to setup additional computers to access EZClaim Remote applications.

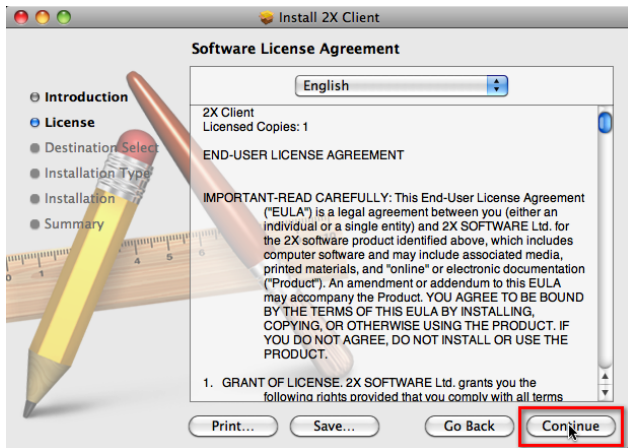
1. Download the installation from:
<http://www.ezclaim.com/remote>
2. Click the **2XClient** link and run the **2xClient.dmg** file
3. Double-Click the **2X Client.pkg** icon



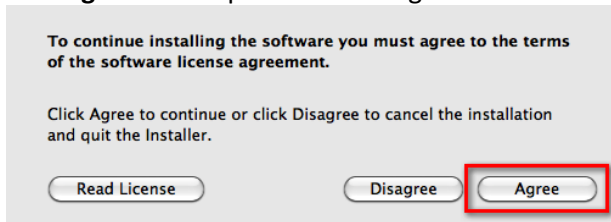
4. Click **Continue**



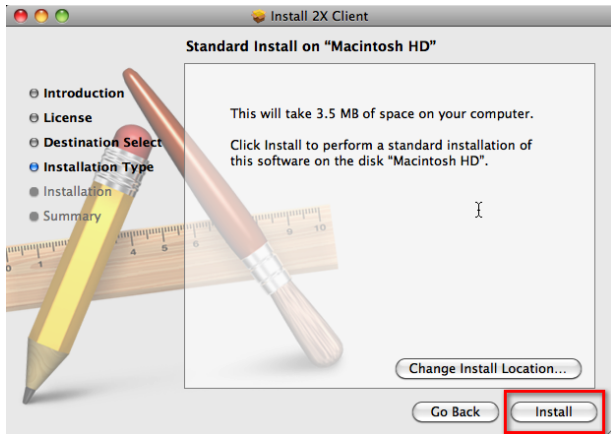
5. Click **Continue**



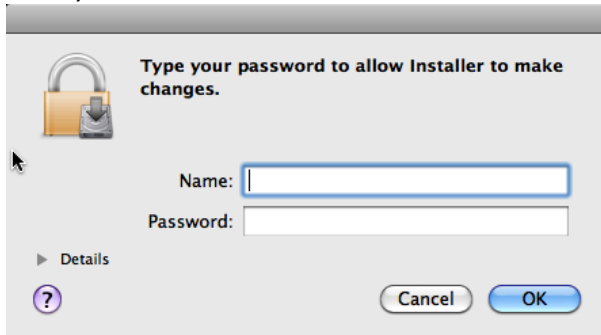
6. Click **Agree** to accept the license agreement



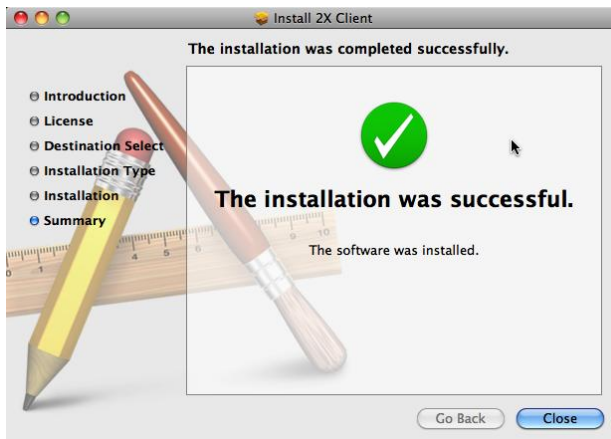
7. Click **Install**



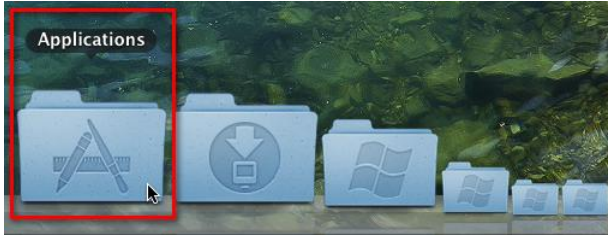
8. Enter your Mac User Name and Password then click **OK**



9. Click **Close** when the installation successful screen appears



10. Open the 2X application from the Applications folder.



The 2X program icon will look like this.

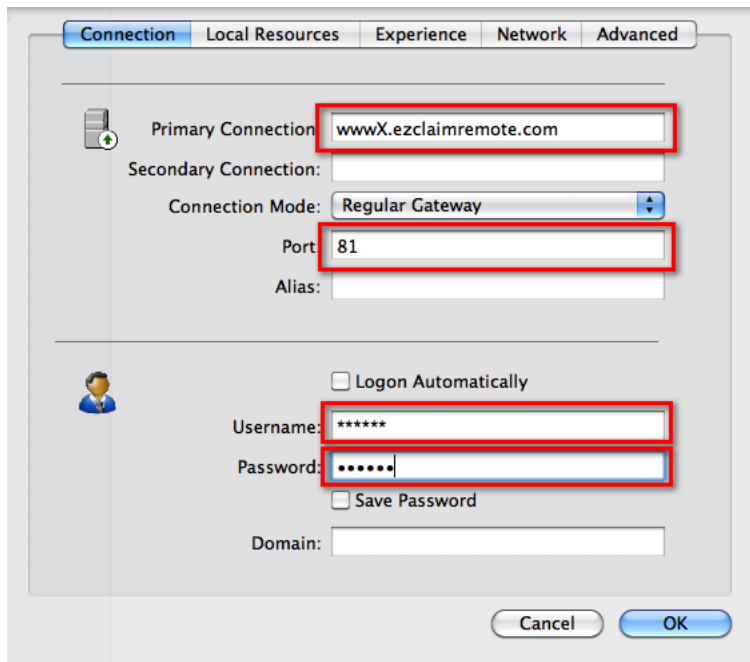


11. Click **Add** when asked to add a connection

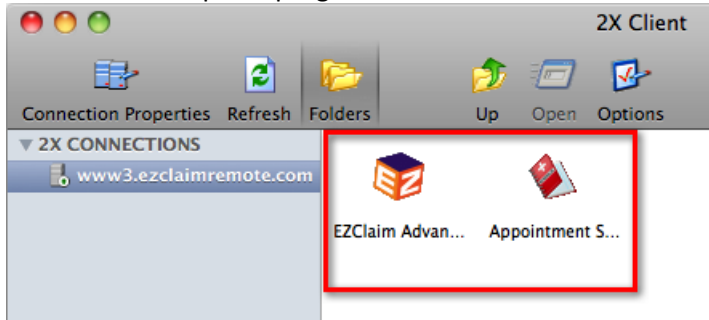


12. Configure the new connection.

- Enter the Primary Connection: **www(x).ezclaimremote.com**, where **(x)** is a number assigned by EZClaim. (e.g. www2.ezclaimremote.com)
- Enter **81** for the Port
- Enter the **Username** and **Password** assigned by EZClaim.
- Click **OK**.

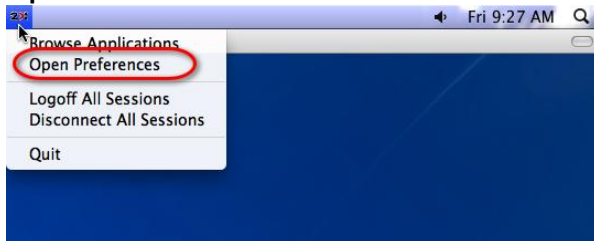


13. Double-click to open a program.

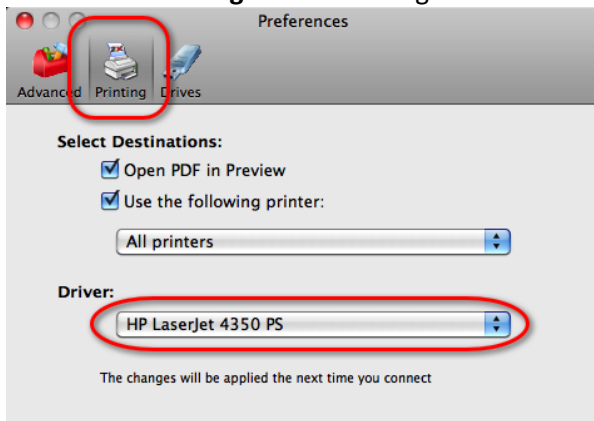


14. Optional print driver settings, only used if you are having trouble printing.
The print driver will need to be set.

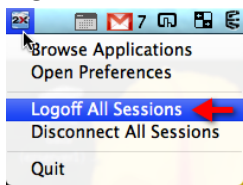
You can open the preferences by clicking the 2X icon at the top of the screen and choosing **Open Preferences.**



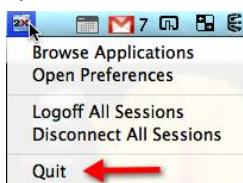
a. Click on the **Printing** icon and change the Driver to **HP LaserJet 4350 PS.**



b. Log Off All Sessions



c. Quit the 2x Client.



d. If the HP Laserjet 4350 PS driver does not work, try the same steps using Apple LaserWriter 8500.
(Some clients need the Apple LaserWriter 8500 driver and other need the HP.)